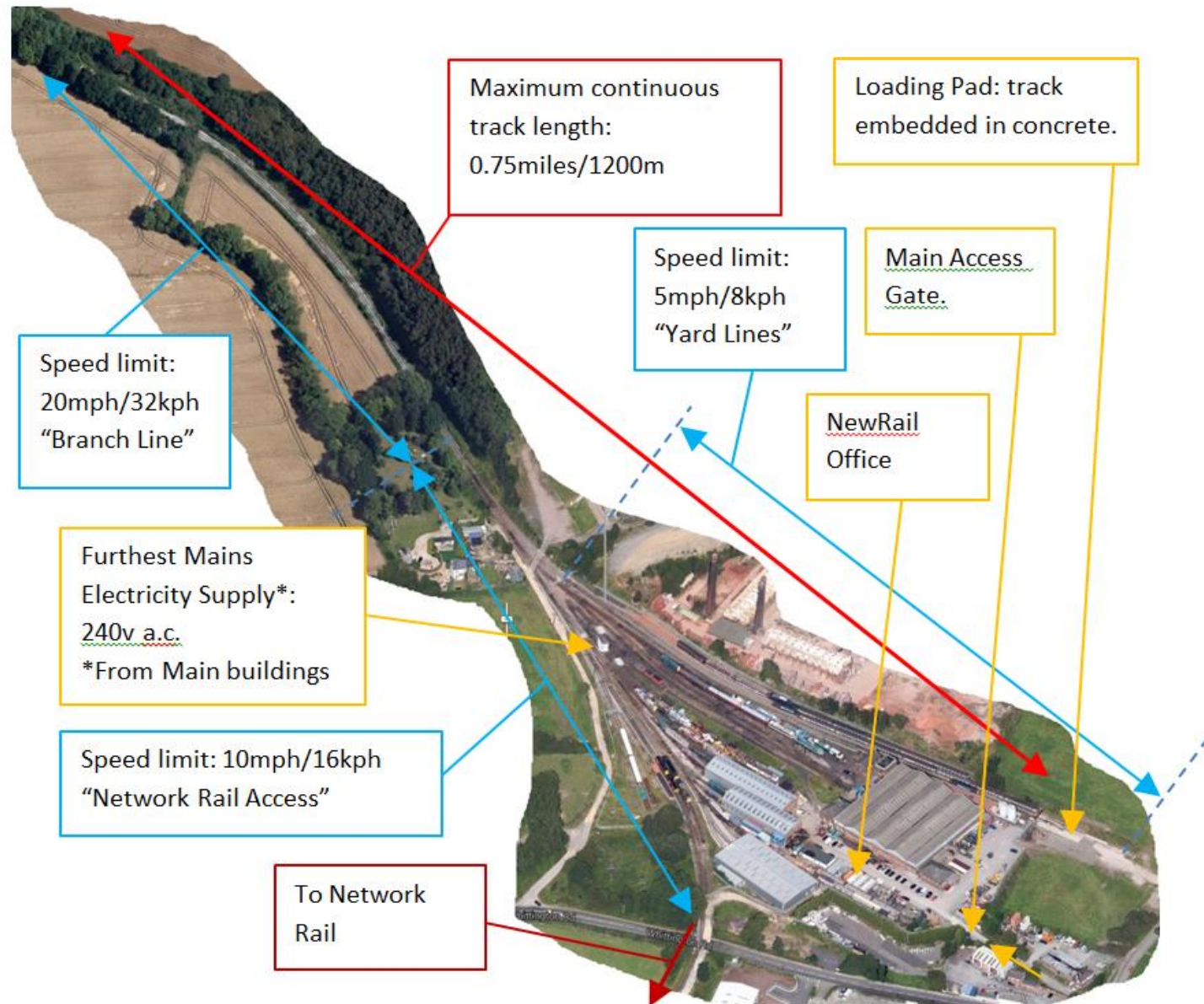


Barrow Hill Roundhouse

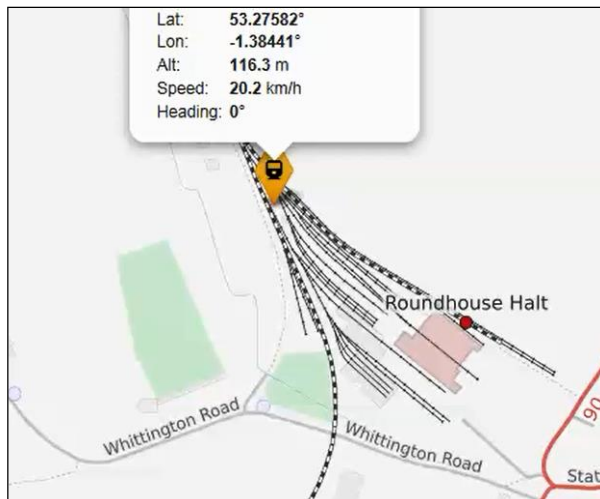
Mark Robinson

Site layout



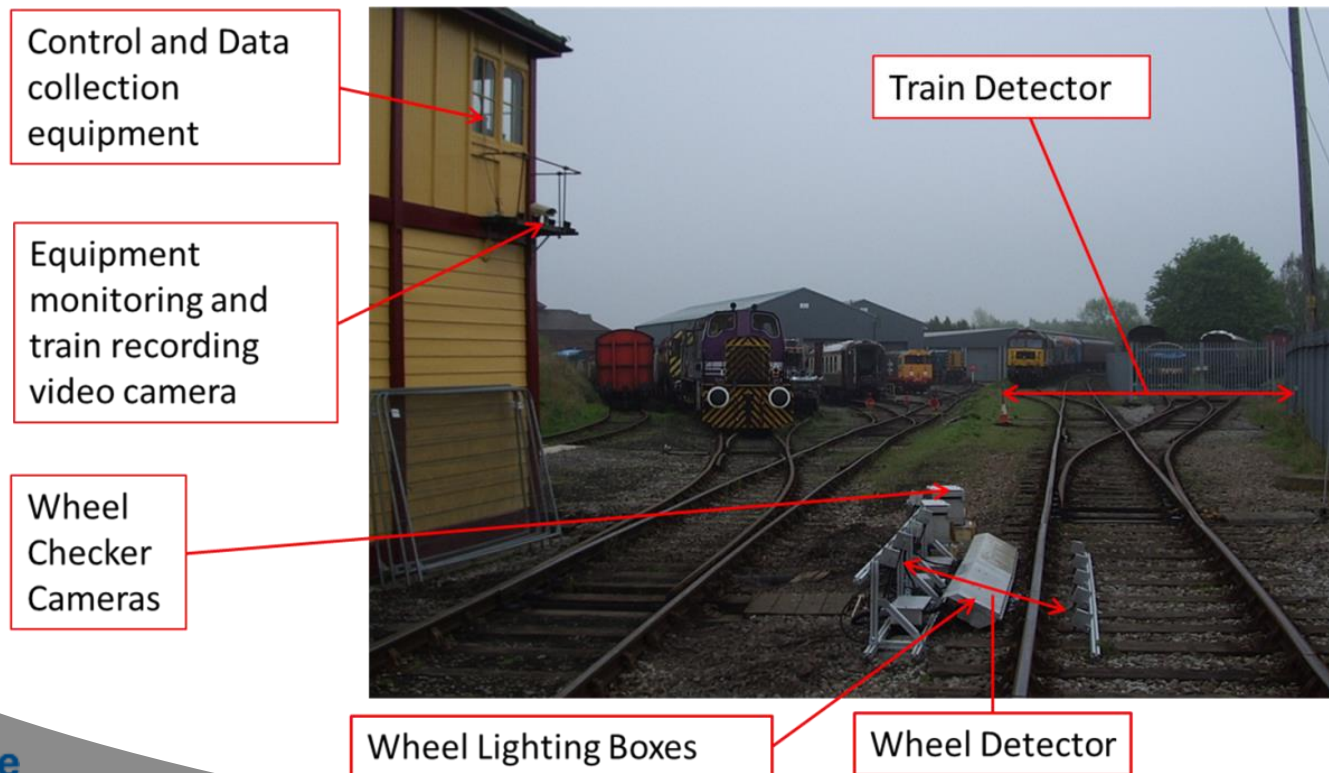
SPARTACUS (FP7) (2013-2016)

- Test train equipped with tracking equipment and location visualised in real time



D-RAIL (FP7) (2011-2014)

- Testing of D-RAIL innovative monitoring system at Barrow Hill
 - MERMEC wheel surface defects inspection system



D-RAIL (FP7) (2011-2014)

- Test installation of MERMEC wheel surface defects inspection system

Wheel Checker
Cameras

Wheel Lighting
Boxes (Protective
cover over lights)

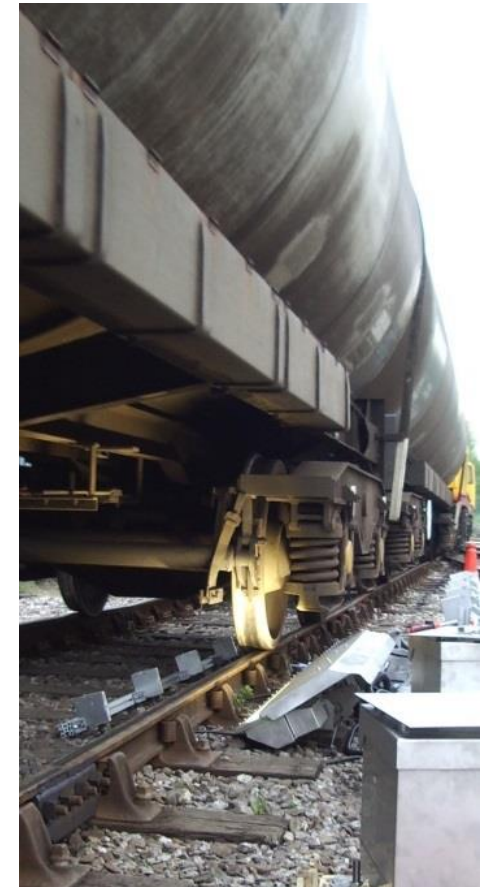


Wheel Detectors

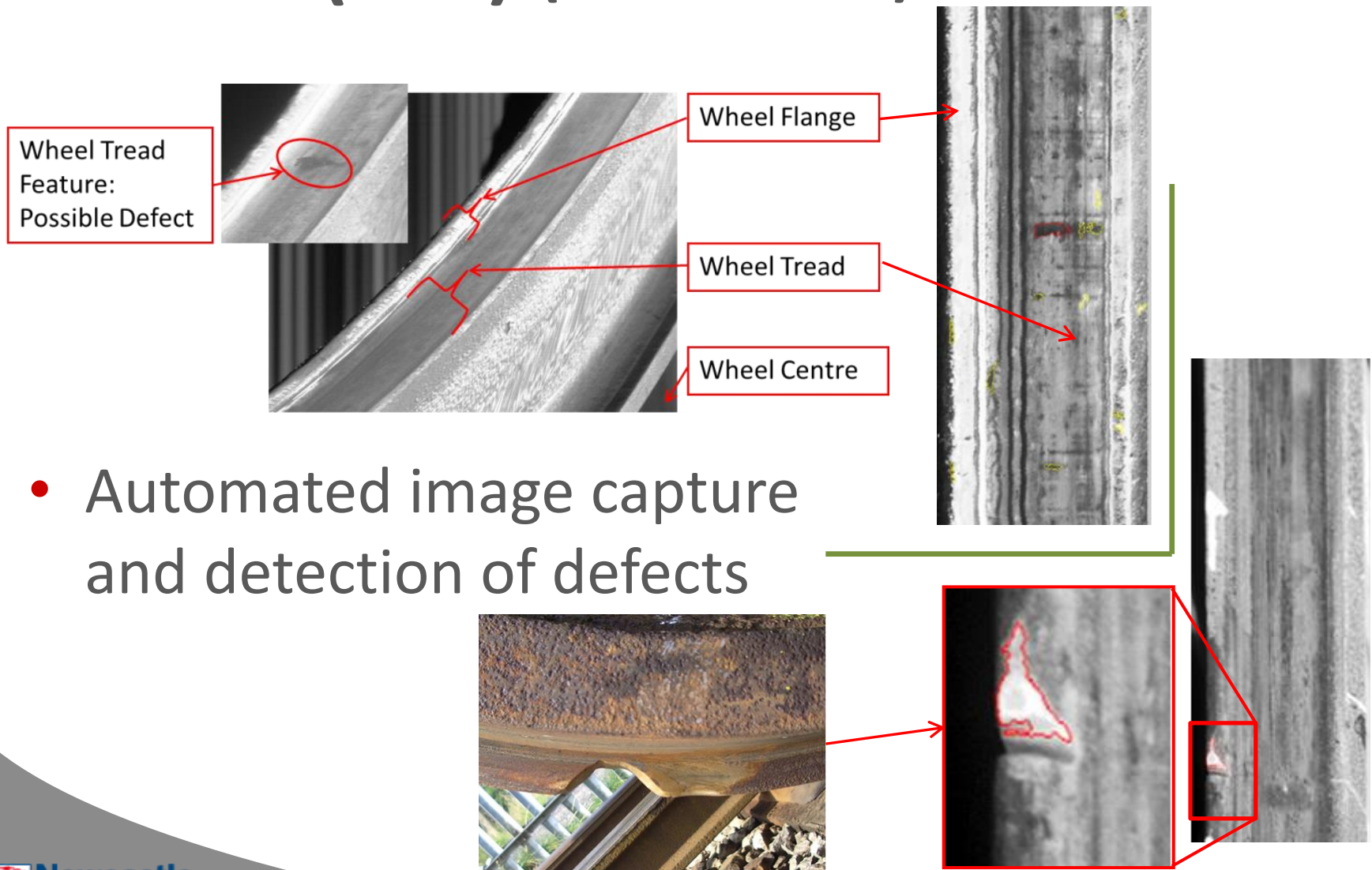


D-RAIL (FP7) (2011-2014)

- Dedicated test trains with artificial defects
- Long term monitoring of site traffic



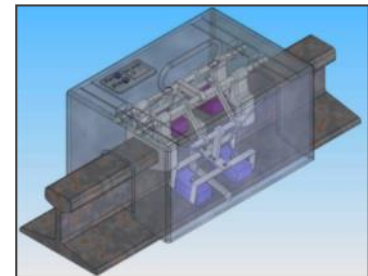
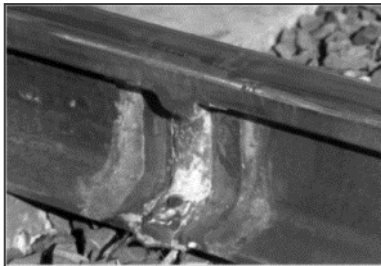
D-RAIL (FP7) (2011-2014)



RailECT (FP7) (2008-2011)



- Welded rail joint inspection and interpretation of NDT output.
- Critical flaw analysis.
- Improving repeatability and consistency of inspection
 - Reducing influence of human factors
- Facilities at Barrow Hill used for testing and demonstrating the equipment developed in a representative environment.



CargoSpeed Demonstration

- Demonstration of the CargoSpeed Roll-on Roll-off intermodal system.
 - Construction of demonstration loading point



Leaf Film Adhesion

- Generating leaf film on rail and testing methods and products for leaf film removal and/or prevention





The UK Rail Research and Innovation Network

The Rolling Stock Innovation Centre (RSIC)

University of
HUDDERSFIELD
Institute of Railway Research



SIEMENS

ALSTOM

BOMBARDIER

HITACHI
Inspire the Next

 northern

RSSB

UNIPART
RAIL

 **BRITISH
STEEL**

NetworkRail

ATKINS



Railway Industry Association

on

Dynamic Air Gun Tester

- To perform large scale joint test and assist with fracture mechanics and input to FEA of full scale structures



